

Legacy Building

Meadow Brook Corporate Park

Description: The Legacy Building is a three-story, Class A office building located within Meadow Brook Corporate Park off U.S. Highway 280 and Meadow Brook Road in Hoover, Alabama.

Project Features:

- Large atrium and lush landscaping
- Excellent access to major transportation arteries
- On-site meeting/conference room available
- Close to Retail, Restaurants and Hotels
- U.S. Post Office within corporate park
- Day Care Center within corporate park
- No County or Occupational Taxes

AVAILABLE FOR LEASE:

Location Square Feet

First Floor 1,030 & 1,413

Rental Rate: \$19.50



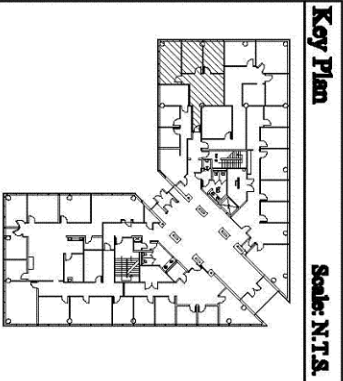
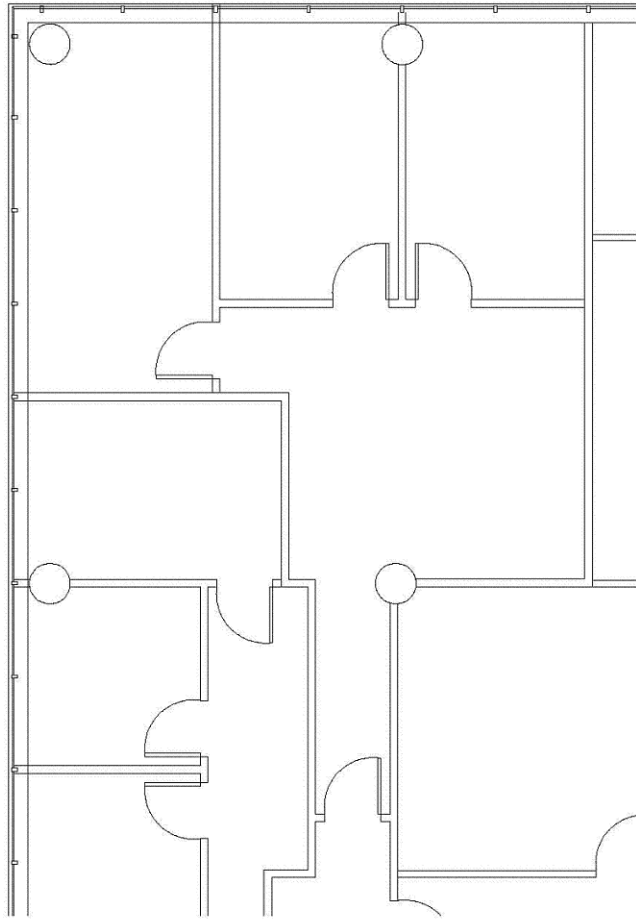
For Leasing Information Contact:

JERRY L. GRANT, CCIM

205.443.4533

jgrant@danielcorp.com

Legacy Building - Suite 140
Date: 9/22/08
1,030 RSF



Key Plan

Scale: N.T.S.

DANIEL
CORPORATION
3450 Gantshew Parkway
Suite 100
Birmingham, AL 35243
Phone: 205.443.4500
www.danielcorp.com

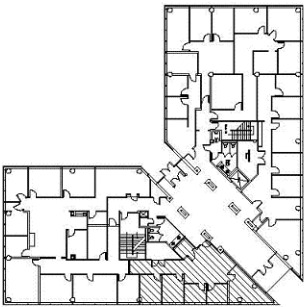
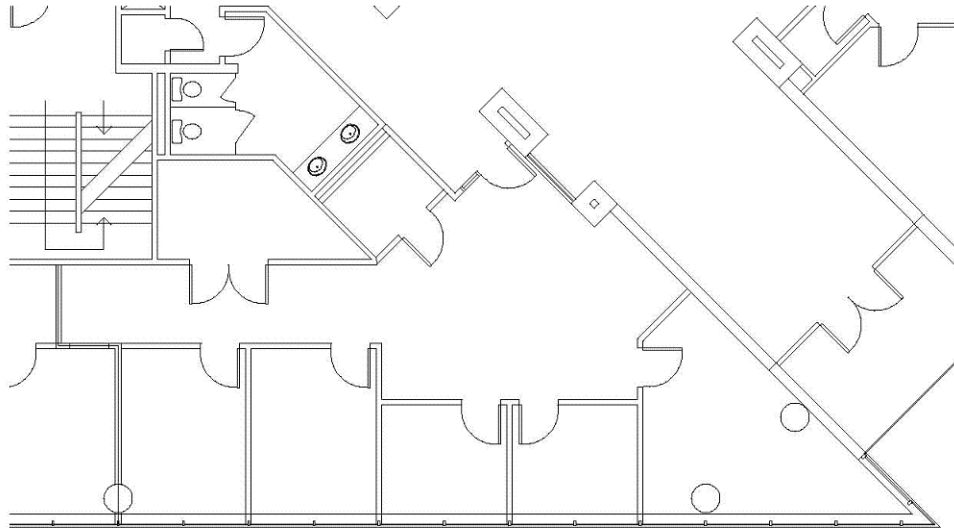
**Legacy Building
Birmingham, Alabama**

For leasing information contact:
Jerry Grant
(205)443-4533
jgrant@danielcorp.com

**CORPORATE
DESIGN**

3118 Bellwood Drive, Suite 114
Birmingham, Alabama 35243
Phone: 205.903.6745
Fax: 205.969.0283

Legacy Building - Suite 150
 Date: 9.11.09
 1,413 RSF



Key Plan

Scale: N.T.S.

DANIEL
 CORPORATION
 3660 Grandview Parkway
 Suite 100
 Birmingham, AL 35243
 Phone: 205.443.4500
 www.danielcorp.com



Legacy Building
 Birmingham, Alabama

For leasing information contact:

Jerry Grant
 (205)443-4533
 jgrant@danielcorp.com

CORPORATE
 DESIGN

3118 Bellwood Drive, Suite 114
 Birmingham, Alabama 35243
 Phone: 205.903.6745
 Fax: 205.969.0283